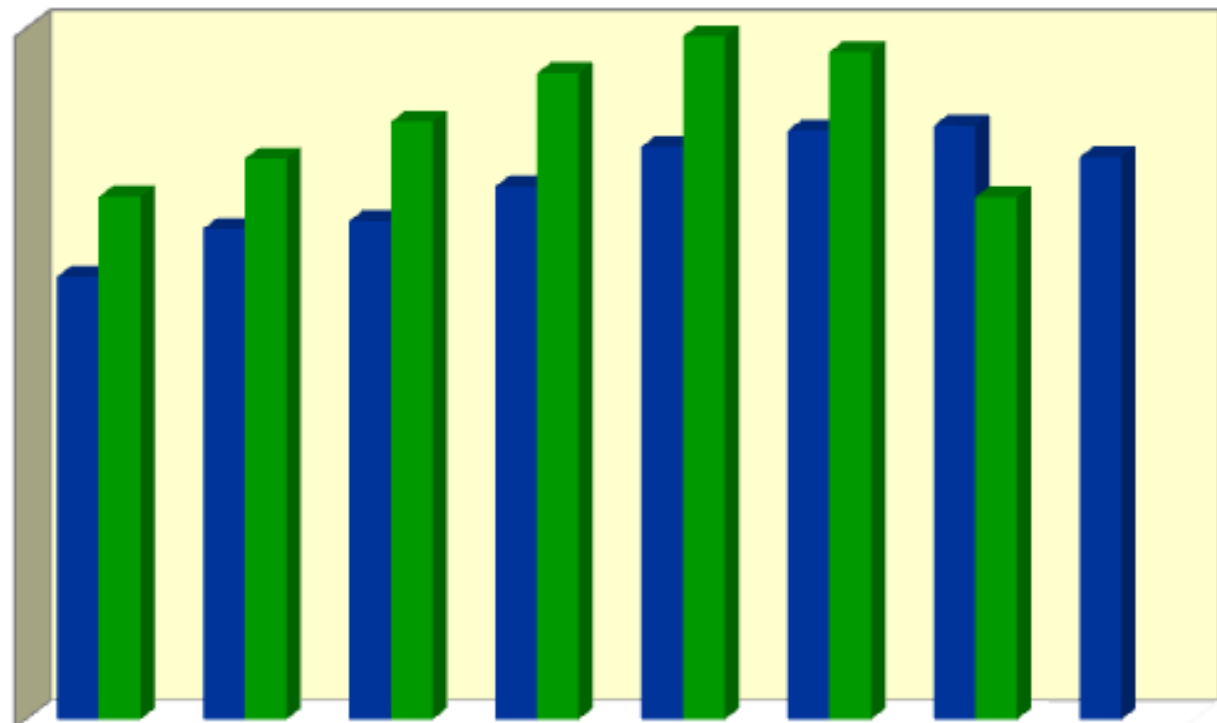


City of Edgerton

Average Appraised Value vs Average Sales Price



	2002	2003	2004	2005	2006	2007	2008	2009
■ Average Appraisal	\$89,739	\$99,438	101,029	108,014	116,091	119,355	120,368	113,999
■ Average Sale	\$105,942	113,690	121,152	131,030	138,478	135,320	105,848	