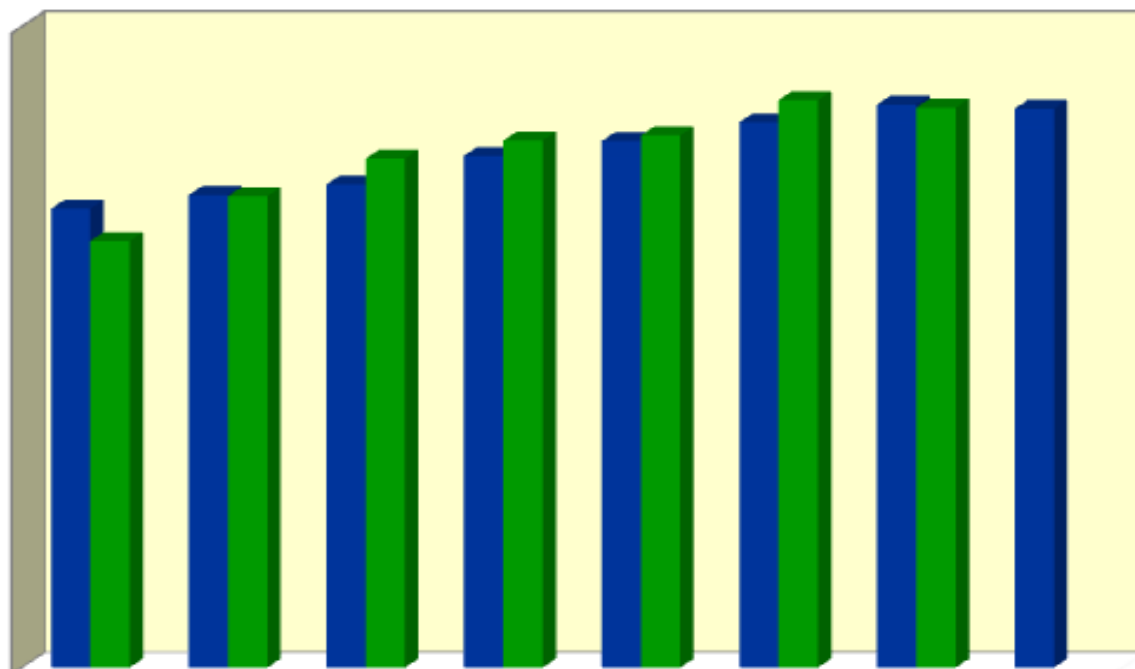


City of Prairie Village

Average Appraised Value vs Average Sales Price



	2002	2003	2004	2005	2006	2007	2008	2009
■ Average Appraisal	\$179,015	\$184,376	188,497	199,661	205,416	212,758	219,621	218,012
■ Average Sale	\$166,403	183,911	198,582	205,615	207,602	221,402	218,404	